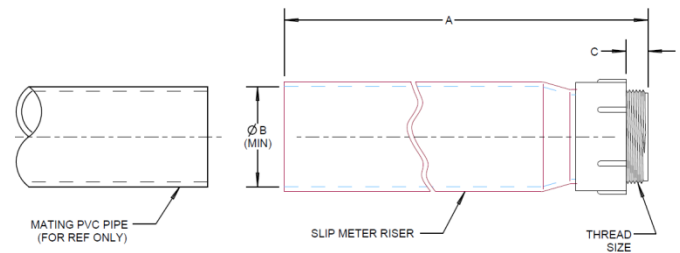


Slip Meter Risers

Slip Meter Risers	Part Number	Size	EACH UPC	Carton Quantity
Price Group: X1	SMR200X2400	2" x 24"	670648339147	20
	SMR250X2400	2-1/2" x 24"	670648338126	1
	SMR300X2400	3" x 24"	670648337945	10
	SMR400X2400	4" x 24"	670648160963	10
	SMR200X2400S	2" x 24" Split	670648194364	10
	SMR300X2400S	3" x 24" Split	670648194371	5

Part Number	Thread Size	B (min.) in.	Mating PVC Pipe Size & Type
SMR200X2400	2" NPT	2.492	2" Sch 40 Conduit (Ref. O.D. 2.375")
SMR200X2400S	2" NPT	2.492	2" Sch 40 Conduit (Ref. O.D. 2.375")
SMR250X2400	2-1/2" NPSC	2.961	2-1/2" Sch 40 Conduit (Ref. O.D. 2.875")
SMR300X2400	3" NPSC	3.616	3" Sch 40 Conduit (Ref. O.D. 3.500")
SMR300X2400S	3" NPSC	3.616	3" Sch 40 Conduit (Ref. O.D. 3.500")
SMR400X2400	4" NPSC	4.859	4" Sch 40 Conduit (Ref. O.D. 4.500")



Slip Meter Risers are designed for use in electrical service entrance applications. They provide solutions for applications requiring a non-rigid connection, with incoming service conduit diameters ranging from 2" to 4". The Slip Meter Risers are fitted with a terminal adapter for easy installation at the service entrance location, and provide a low-cost method to comply with NEC 300-5 (j), which requires protection for buried cables in areas subject to ground movement due to frost or trench settling.

Features

- Designed to provide faster and easier underground service entrance installations.
- Provides cable protection from ground movement.
- Accommodates incoming service conduit diameters ranging from 2" to 4".
- Fitted with Terminal Adapters for easy installing.
- Complies with NEC 300-5(J)

NEC Article 300 Wiring Methods

(J) Earth Movement. Where direct buried conductors, raceways, or cables are subject to movement by settlement or frost, direct buried conductors, raceways, or cables shall be arranged to prevent damage to the enclosed conductors or to equipment connected to the raceways.

(Informational Note): This section recognizes "S" loops in underground direct burial to raceway transitions, expansion joints in raceway risers to fixed equipment, and generally the provision of flexible connections to equipment subject to settlement or frost heaves.

